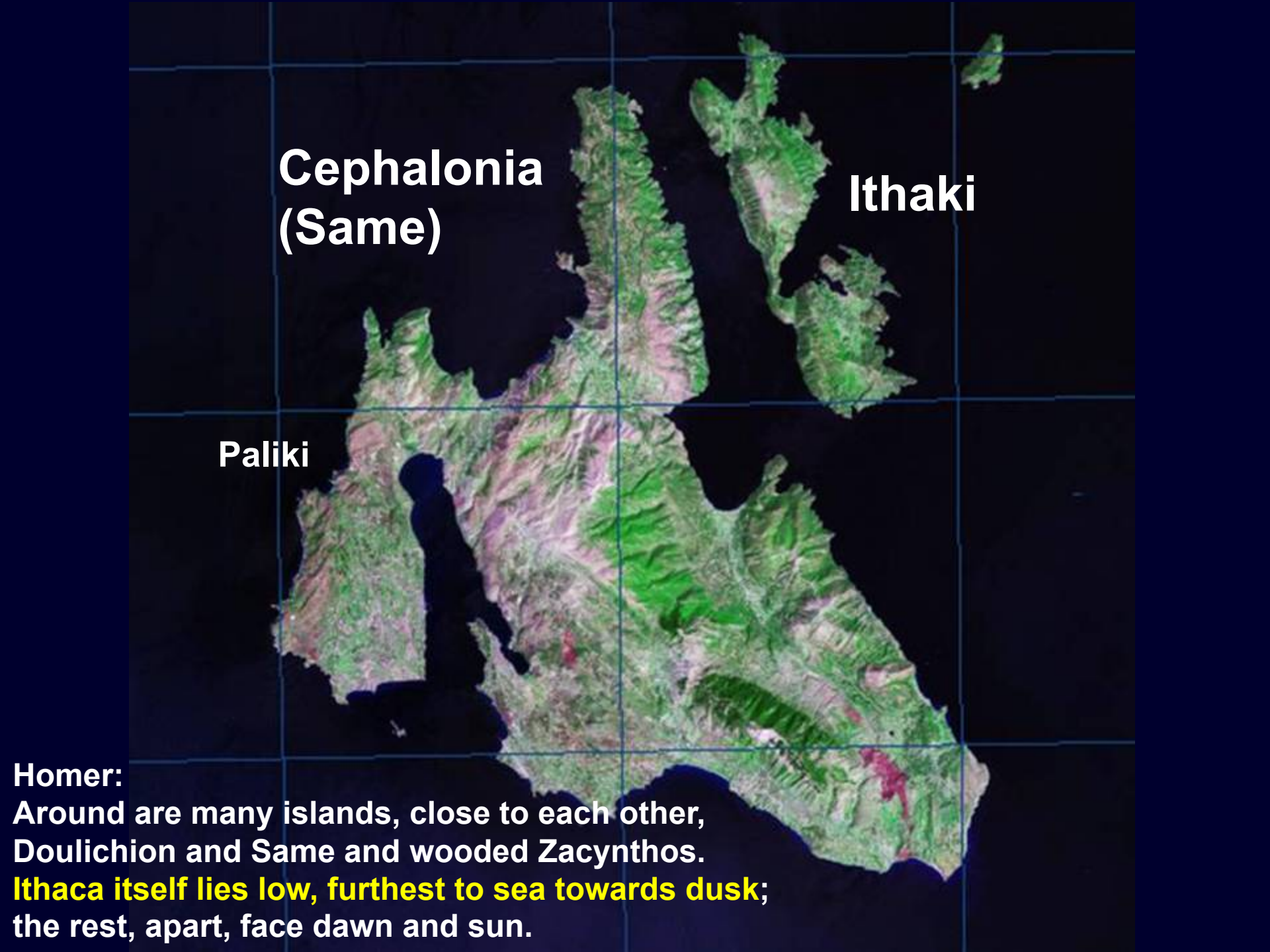


**New Borehole and Geoscience Data from Kefalonia:
In Search of Odysseus' Homeland
John Underhill, Edinburgh University**



A topographic map of the Ithaca archipelago, showing the islands of Cephalonia (labeled as 'Same'), Paliki, and Ithaki. The map uses a color gradient to represent elevation, with green for lower elevations and brown/purple for higher elevations. A grid of latitude and longitude lines is overlaid on the map. The text 'Cephalonia (Same)' is located in the upper left, 'Paliki' is on the western side of the main island, and 'Ithaki' is on the eastern side of the main island.

**Cephalonia
(Same)**

Ithaki

Paliki

Homer:
Around are many islands, close to each other,
Doulichion and Same and wooded Zacynthos.
Ithaca itself lies low, furthest to sea towards dusk;
the rest, apart, face dawn and sun.

Ithaki

“Ithaca itself lies low”



Paliki





Lefkas

Ithaca

Doulichion

Same
(Cephalonia)

Zacynthos

Homer:

Around are many islands, close to each other,
Doulichion and Same and wooded Zacynthos.

Ithaca itself lies low, furthest to sea towards dusk;
the rest, apart, face dawn and sun.



• Same

• Argostoli

• Lixouri

Thinia

• Fiscardo



August 12 1953 : Magnitude 7.2 earthquake - 800 deaths



Poros, SE Kefalonia



1953 - 60cm



Hillside overlooking Agia Sotira



View from Petrikata ("Fallen Rocks")



Satellite photograph - Southern Thinia



● Drilling location

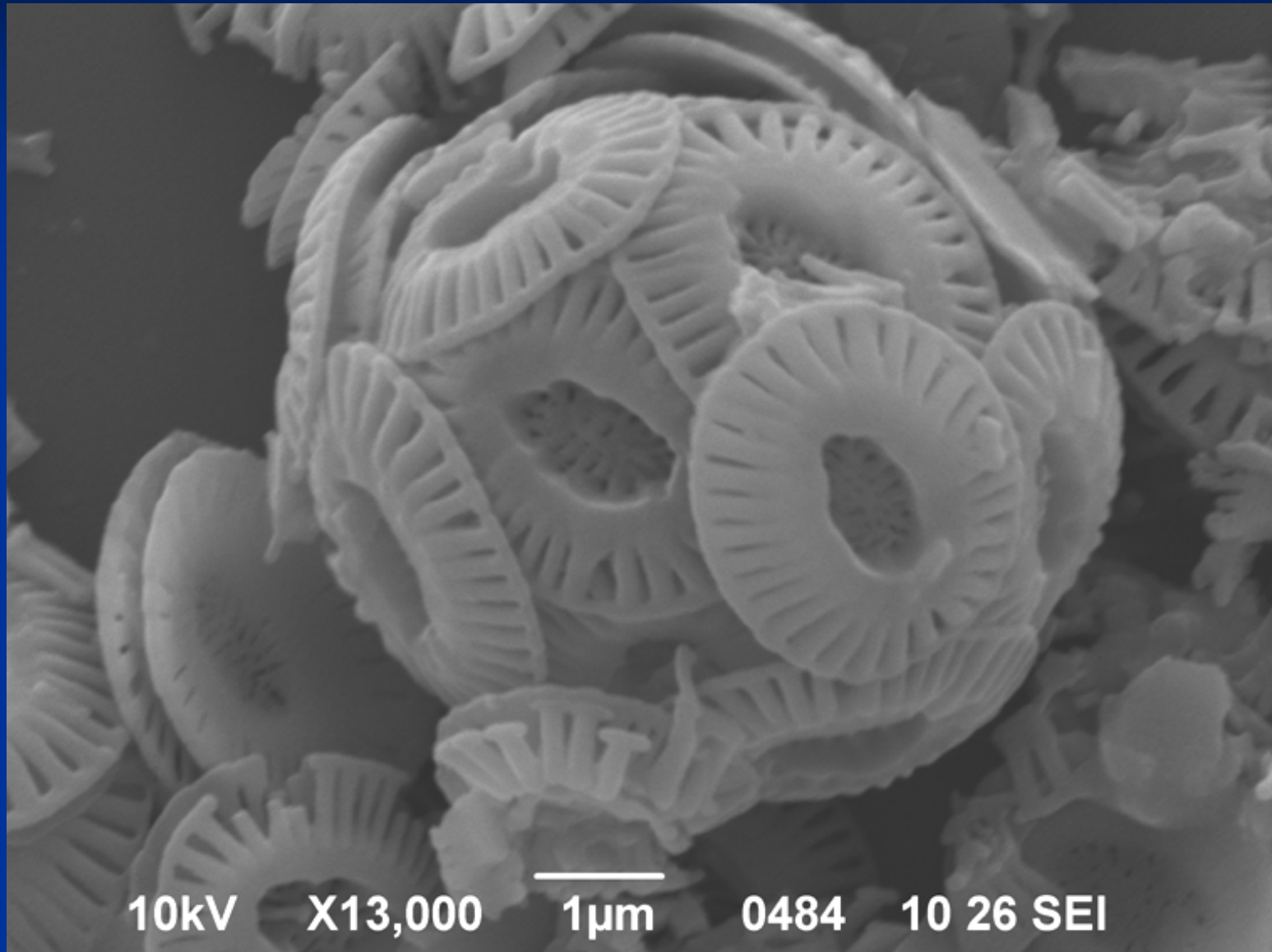
Drilling rig on site

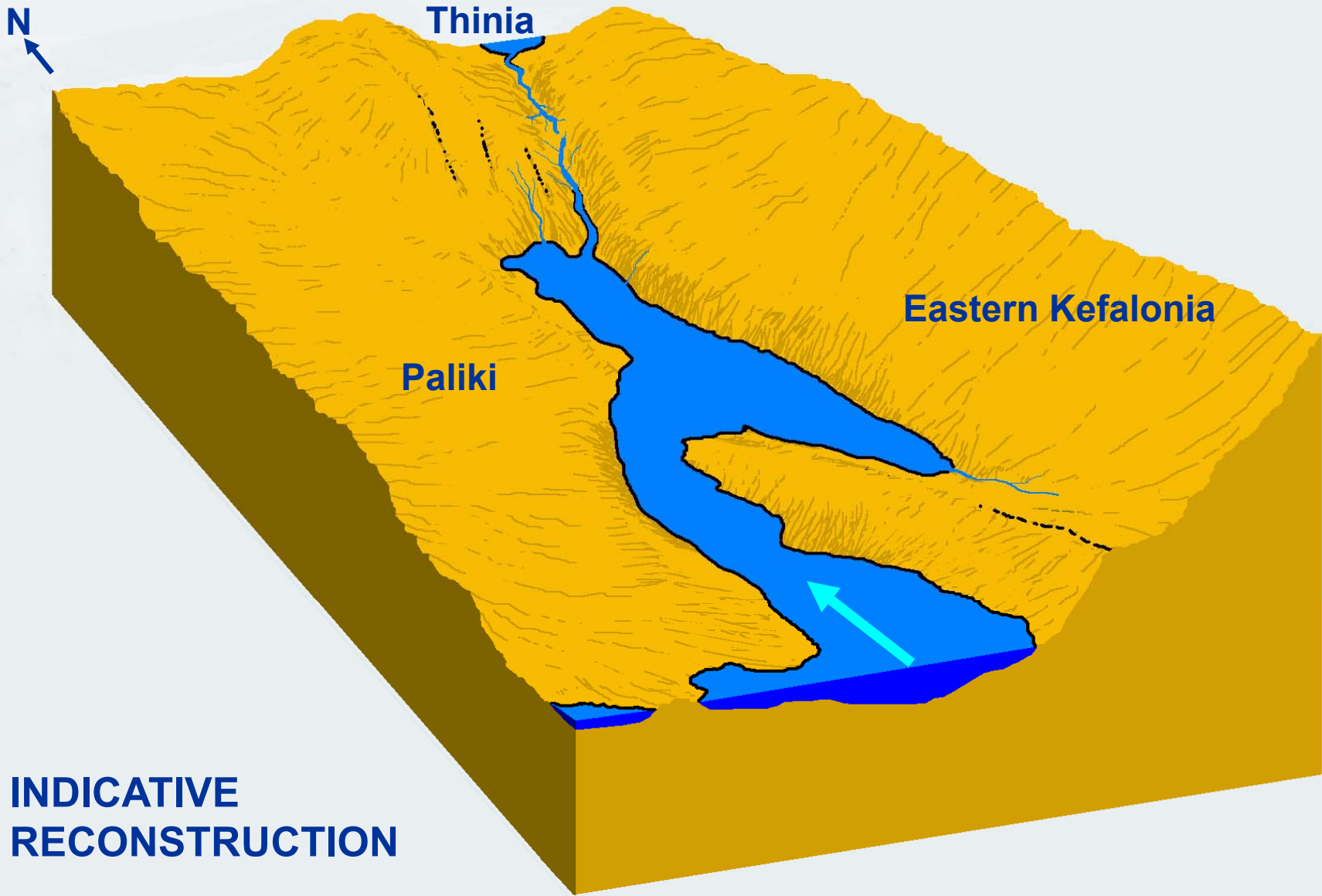
**Drills to 122m – 15m below
sea level.**

No solid limestone



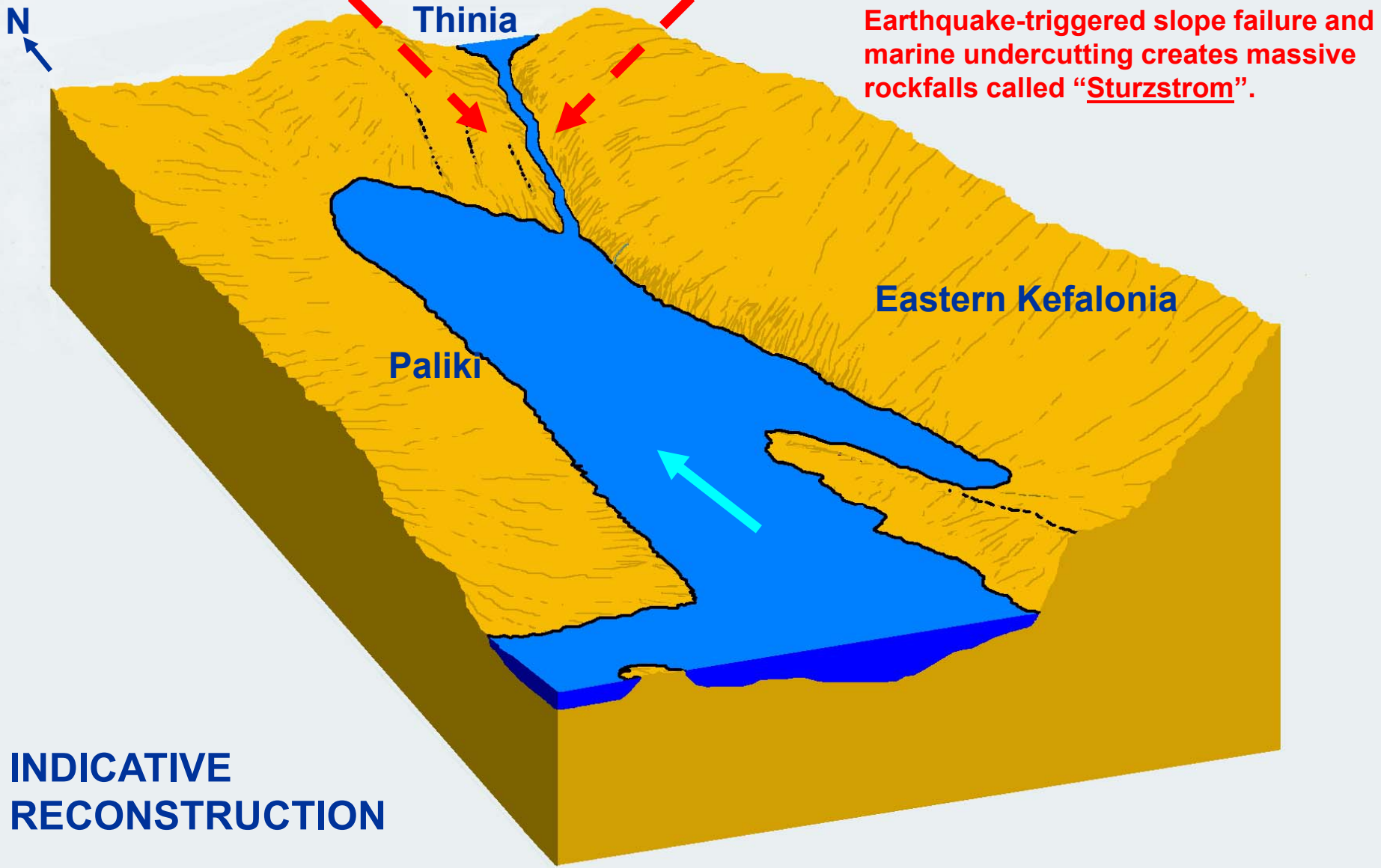
Recent marine nanofossils found 100m above sea level





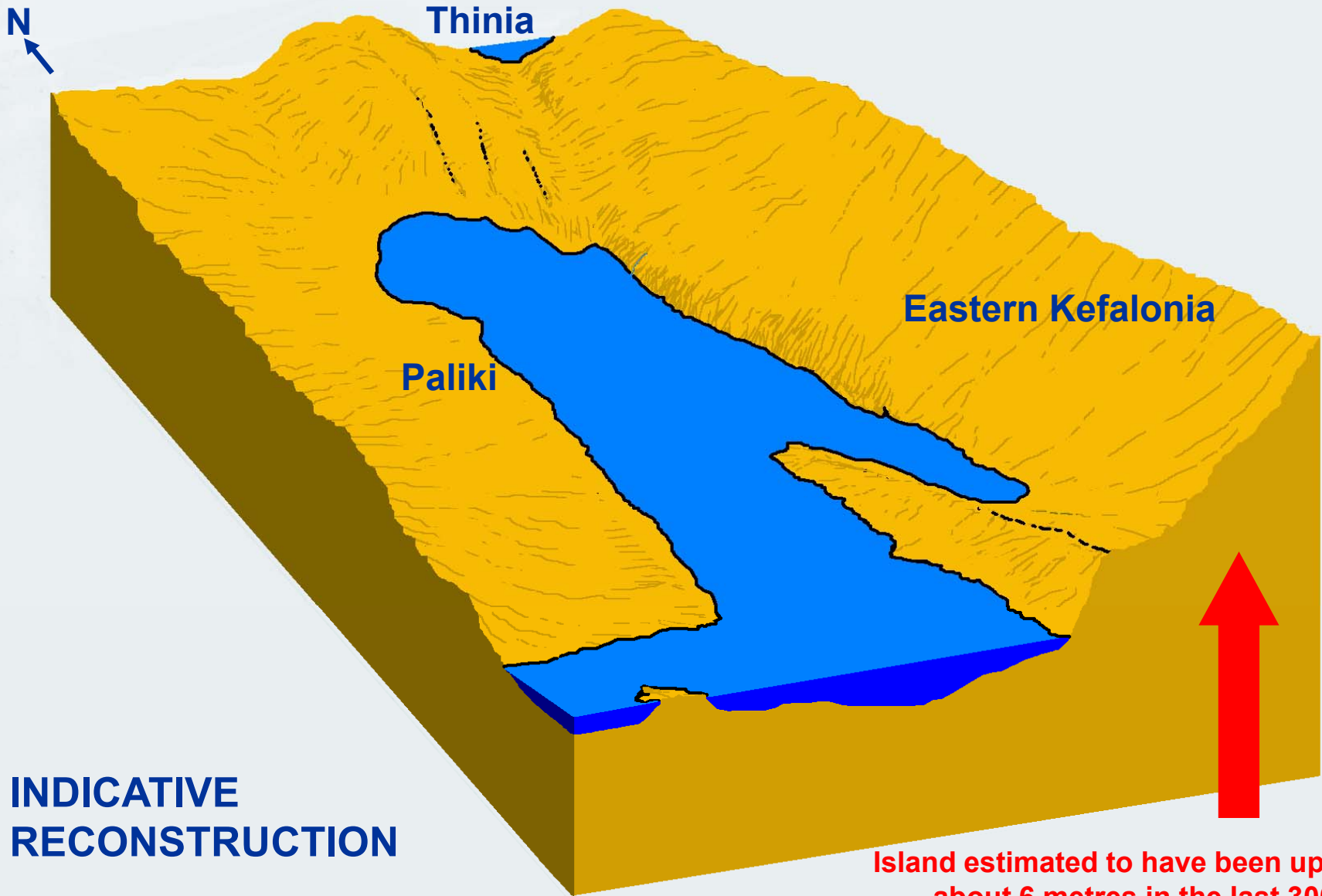
**INDICATIVE
RECONSTRUCTION**

8,000 years ago – incoming sea level 15 metres lower than today



INDICATIVE
RECONSTRUCTION

6,000 years ago – incoming sea level 2 metres lower than today



**INDICATIVE
RECONSTRUCTION**

**Island estimated to have been uplifted by
about 6 metres in the last 3000 years**

Present Day